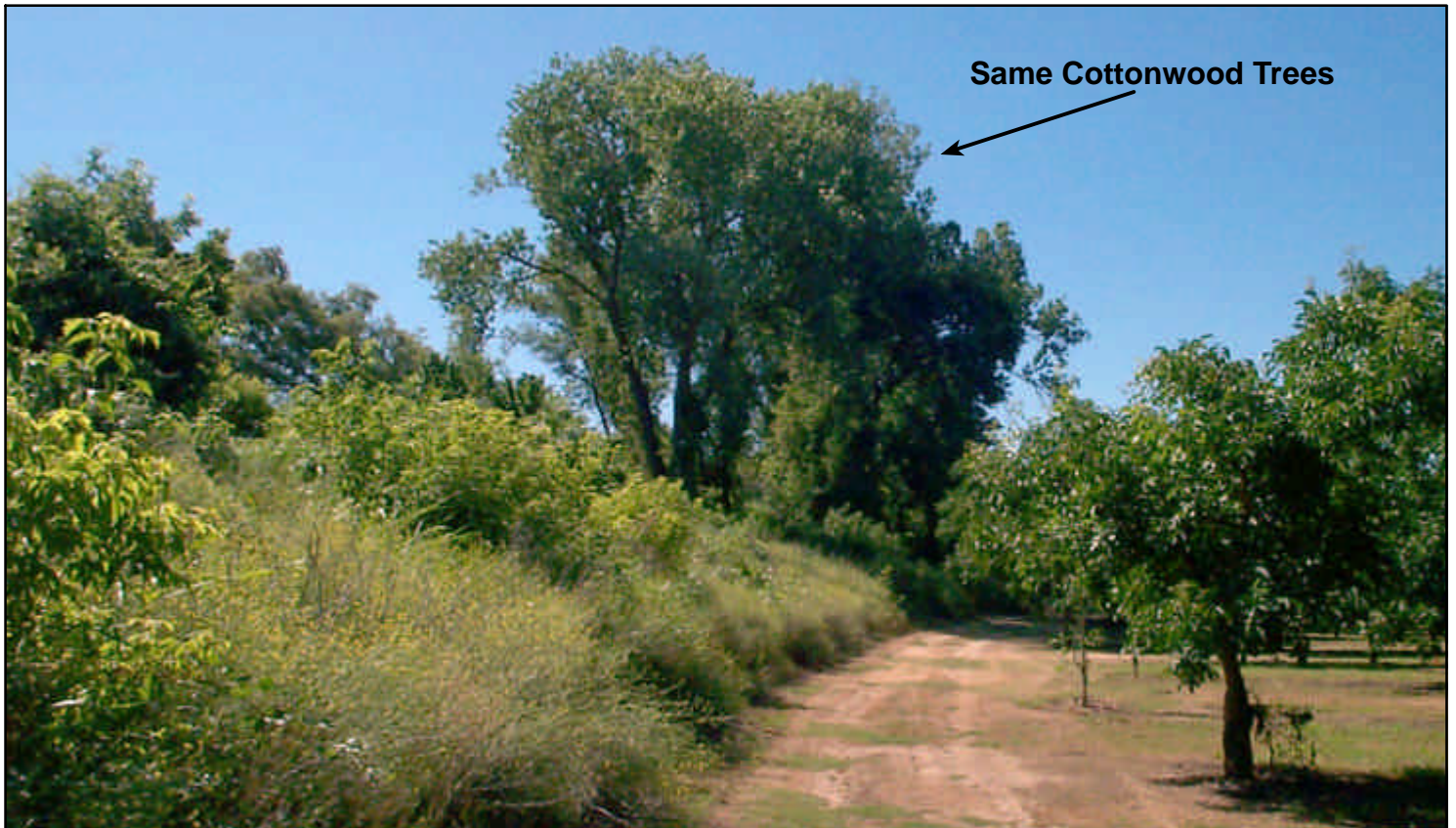




**Cottonwood
Trees**



Same Cottonwood Trees

Figure 17: Top Photograph--Oblique aerial photograph looking upstream on Mud Creek; note location of trees relative to lower photograph. Lower Photograph--Looking downstream along the right (west) bank of Mud Creek; note the location of trees from aerial photograph. Berm appears to be composed of flood debris and soils from the orchards and is covered in stall thistle in this area.